

# GLENWOOD COLLECTION

THE TOWNSON BAYVIEW

B24TH152  
126 CREDIT LANE, RICHMOND HILL

TTH-05 OPT. GROUND  
ELEV. A OPT GROUND | 2,547 SQ. FT.  
4 BEDROOM | 3 BATH & 1 POWDER

## SPACIOUS HOME OFFERS FLEXIBLE OPTIONS

- Look-out basement
- Ground floor suite
- Upgraded kitchen cabinets & countertops
- 5" wide plank hardwood flooring on main
- 5 Appliances
- 10 ft. ceilings on the main floor
- Smooth finish ceilings throughout
- Tall upper kitchen cabinets
- Spacious kitchen island

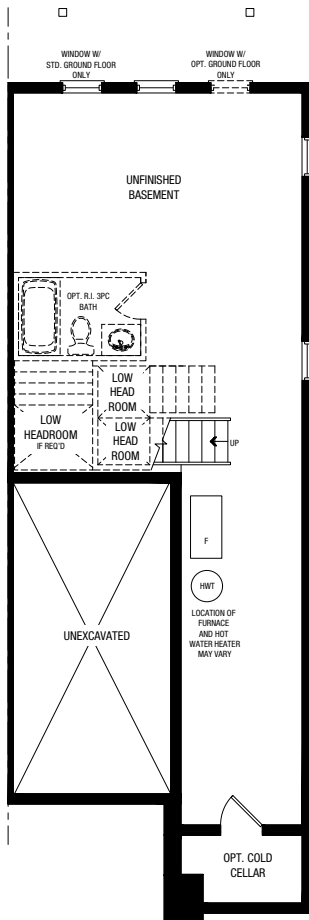
FRONT ELEV. A



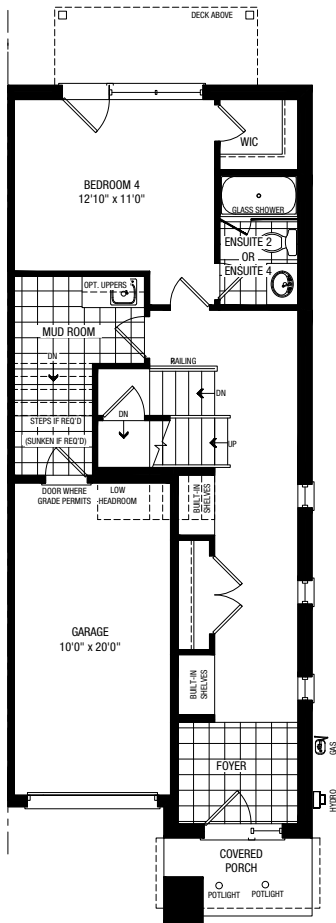
REAR ELEV. A



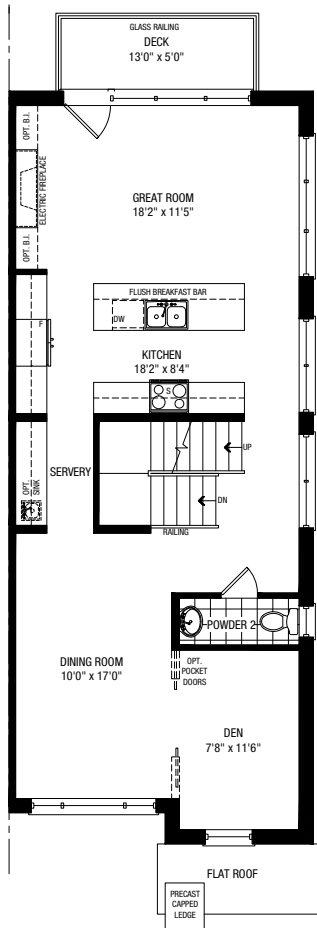
BASEMENT



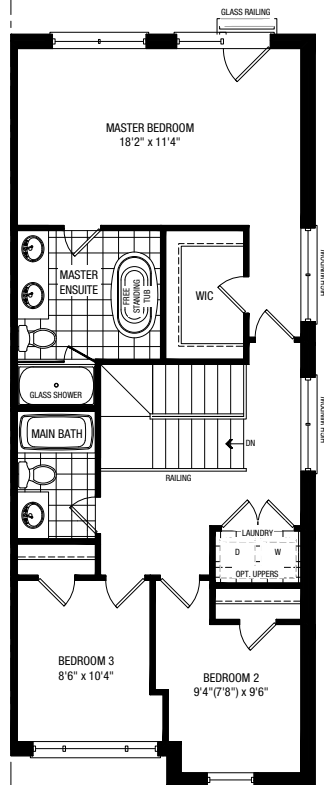
OPT. GROUND A



MAIN



THIRD



Plan is not to scale and all illustrations are artist concept only. Dimensions, specifications, layouts and materials are approximate only and are subject to change without notice. Tile patterns may vary. Window size and location may vary. Actual usable floor space may vary from stated floor area. Bulkheads required for mechanical purposes such as kitchen and washroom exhausts and heating and cooling ducts have not been indicated. Balcony location(s) and sizes vary per floor. Furniture shown is displayed for illustration purposes only and are not included in the sale price. Houses are sold unfurnished. E.&O.E.

Contact Us Today  
to Book an Appointment  
647-205-8738  
bayview@primont.com