

3 BEDROOMS | 1.5-2.5 BATHROOMS



ELEVATION A

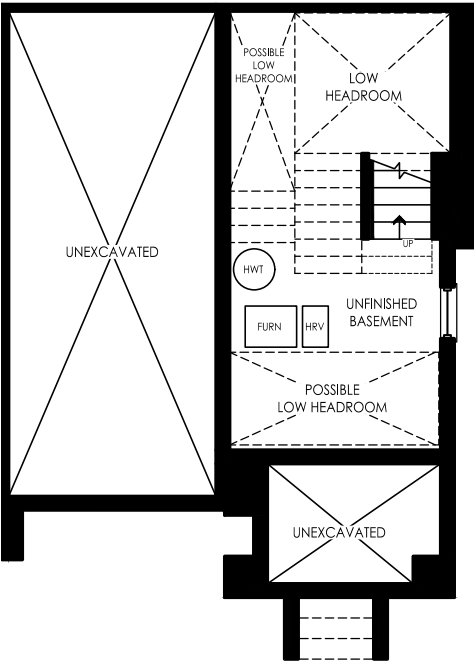
CORNER



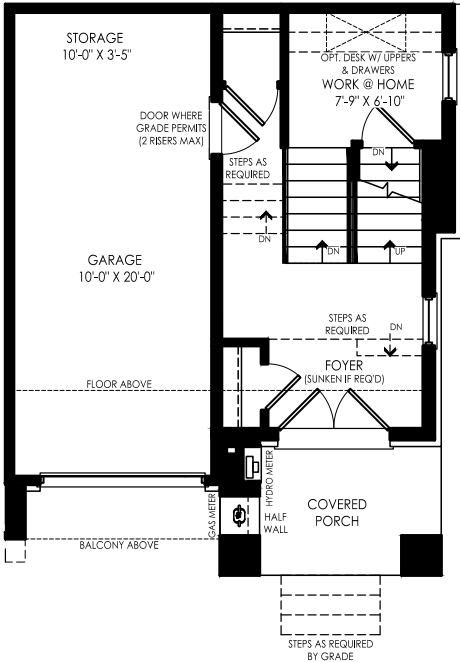
ELEVATION B

CORNER

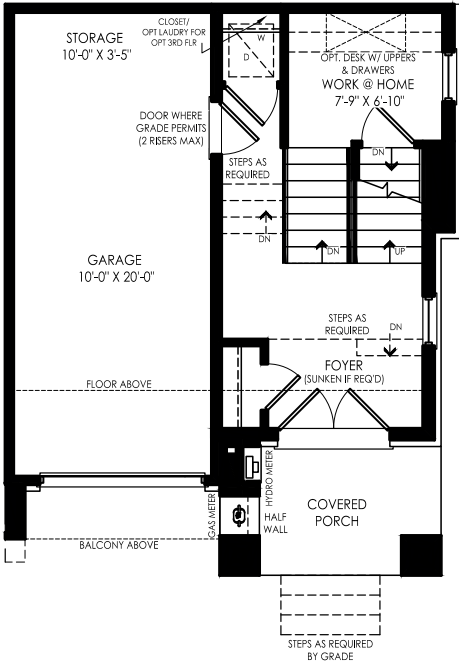
3 BEDROOMS | 1.5-2.5 BATHROOMS



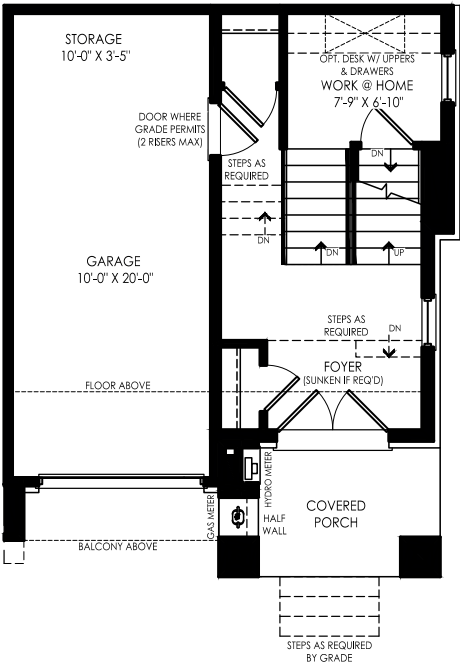
BASEMENT ELEV. A & B



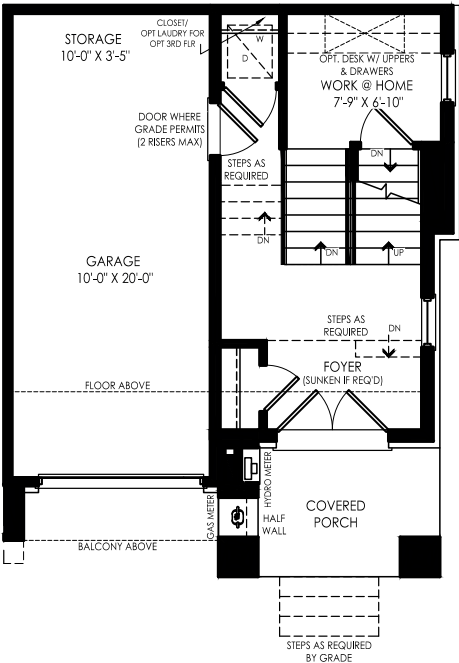
GROUND FLOOR ELEV. A



GROUND FLOOR ELEV. A  
(OPTIONAL 2 BATHROOM)



GROUND FLOOR ELEV. B

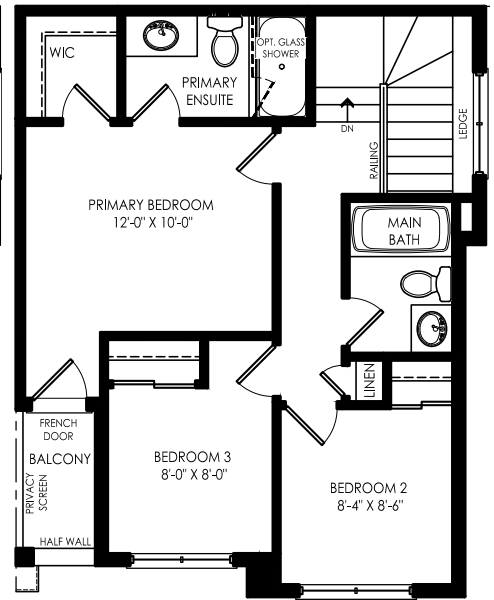
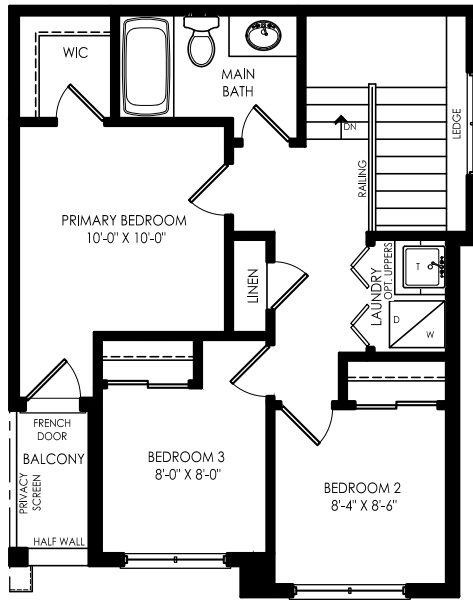
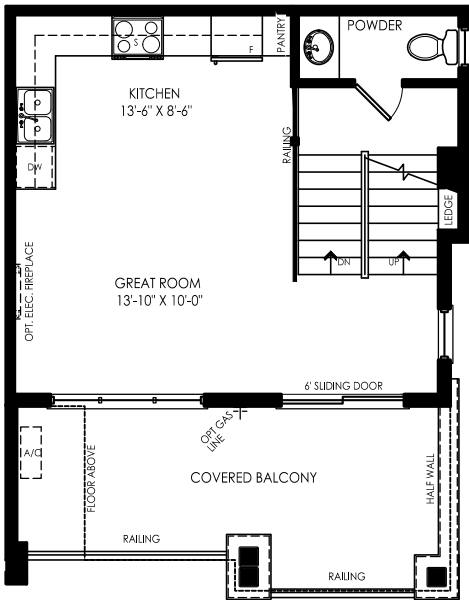


GROUND FLOOR ELEV. B  
(OPTIONAL 2 BATHROOM)

Plan is not to scale and all illustrations are artist concept only. Dimensions, specifications, layouts and materials are approximate only and are subject to change without notice. Tile patterns may vary. Window size and location may vary. Actual usable floor space may vary from stated floor area. Bulkheads required for mechanical purposes such as kitchen and washroom exhausts and heating and cooling ducts have not been indicated. Balcony location(s) and sizes vary per floor. Furniture and islands shown are displayed for illustration purposes only and are not included in the sale price. Suites are sold unfurnished. E.&O.E.

**ELEVATION A**  
1288 SQ.FT.

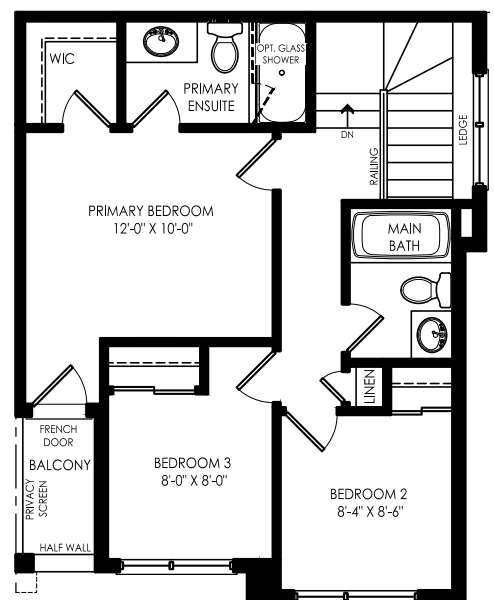
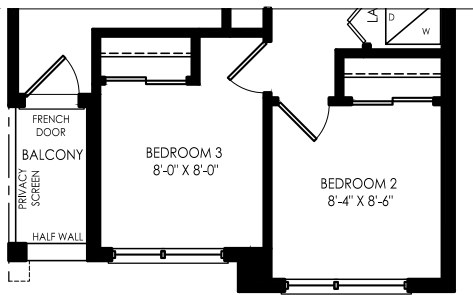
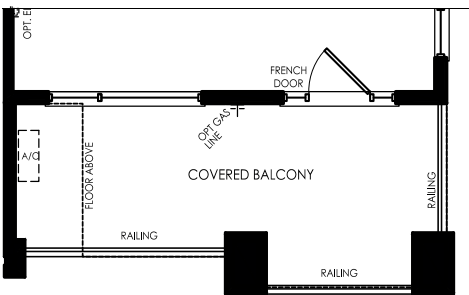
**ELEVATION B**  
1288 SQ.FT.



**SECOND FLOOR ELEV. A**

**THIRD FLOOR ELEV. A**

**THIRD FLOOR ELEV. A  
(OPTIONAL 2 BATHROOM)**



**SECOND FLOOR ELEV. B**

**THIRD FLOOR ELEV. B**

**THIRD FLOOR ELEV. B  
(OPTIONAL 2 BATHROOM)**



3 BEDROOMS | 1.5-2.5 BATHROOMS



END

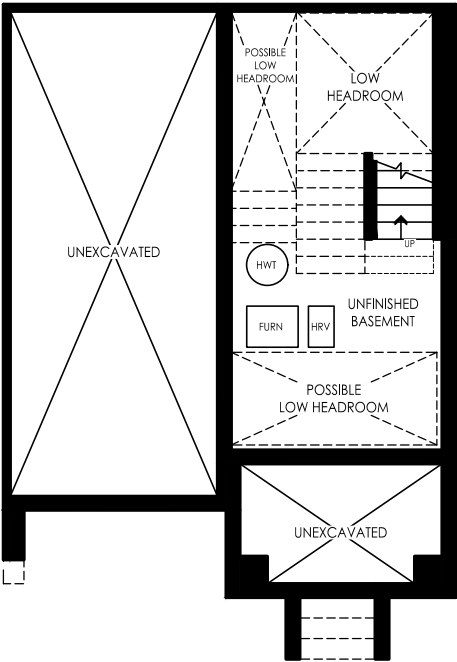
ELEVATION A



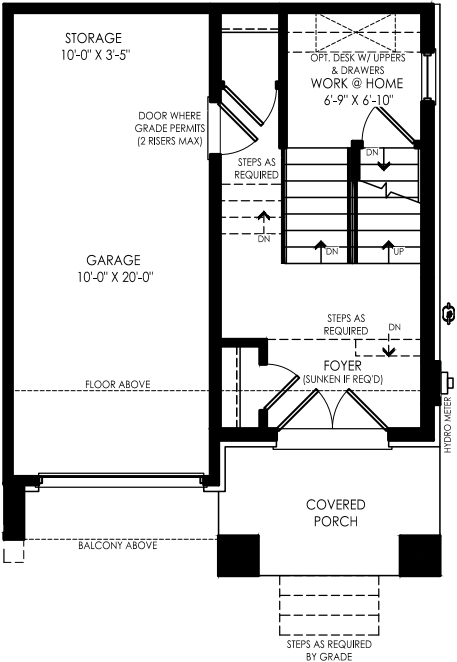
END

ELEVATION B

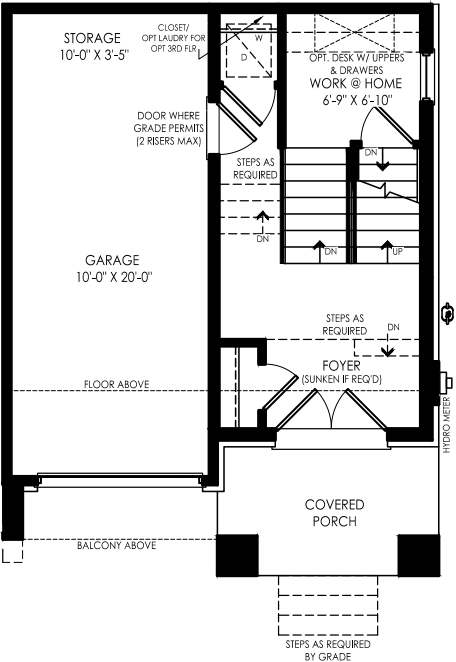
3 BEDROOMS | 1.5-2.5 BATHROOMS



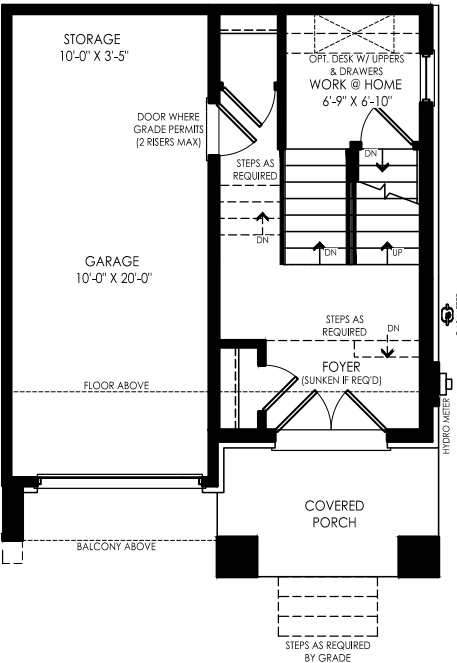
BASEMENT ELEV. A & B



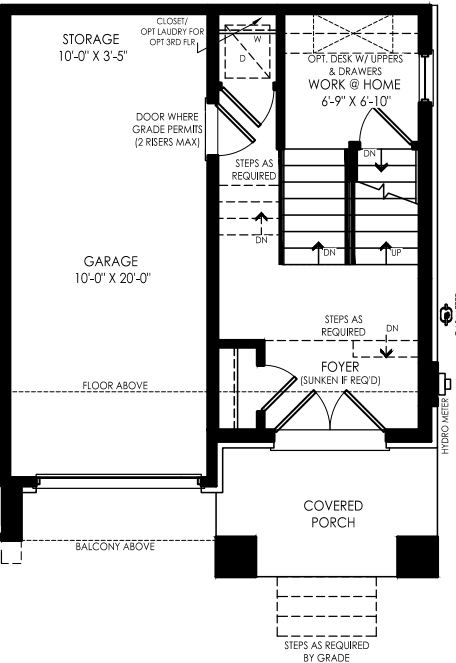
GROUND FLOOR ELEV. A



GROUND FLOOR ELEV. A  
(OPTIONAL 2 BATHROOM)



GROUND FLOOR ELEV. B

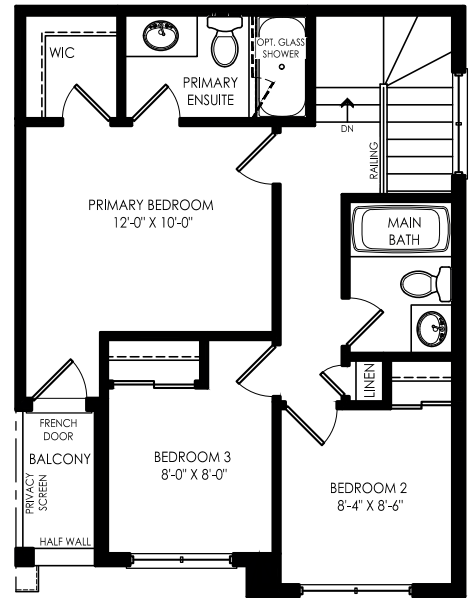
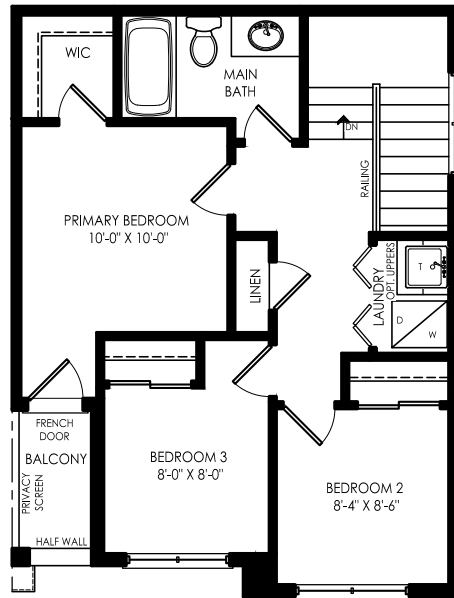
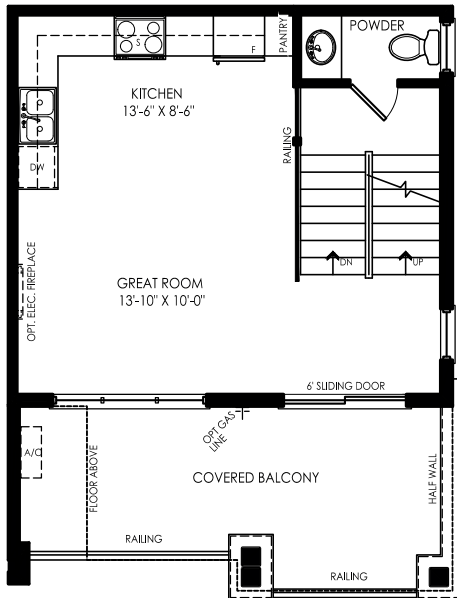


GROUND FLOOR ELEV. B  
(OPTIONAL 2 BATHROOM)

Plan is not to scale and all illustrations are artist concept only. Dimensions, specifications, layouts and materials are approximate only and are subject to change without notice. Tile patterns may vary. Window size and location may vary. Actual usable floor space may vary from stated floor area. Bulkheads required for mechanical purposes such as kitchen and washroom exhausts and heating and cooling ducts have not been indicated. Balcony location(s) and sizes vary per floor. Furniture and islands shown are displayed for illustration purposes only and are not included in the sale price. Suites are sold unfurnished. E.&O.E.

**ELEVATION A**  
1253 SQ.FT.

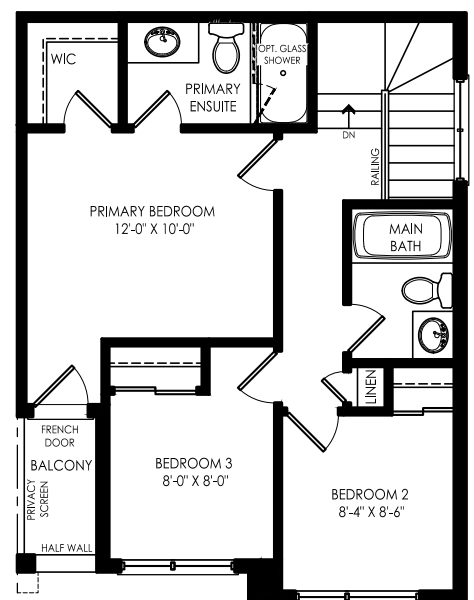
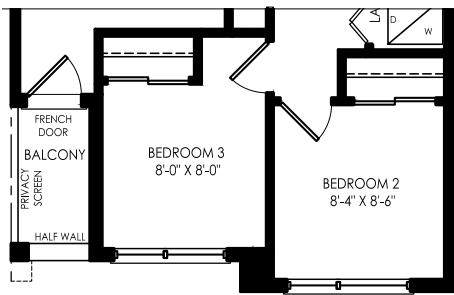
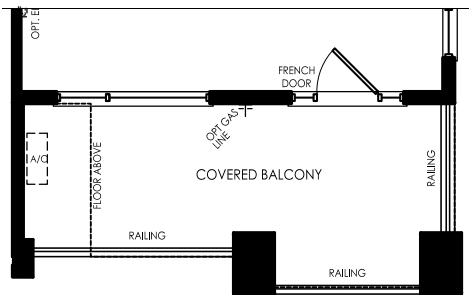
**ELEVATION B**  
1253 SQ.FT.



**SECOND FLOOR ELEV. A**

**THIRD FLOOR ELEV. A**

**THIRD FLOOR ELEV. A  
(OPTIONAL 2 BATHROOM)**



**SECOND FLOOR ELEV. B**

**THIRD FLOOR ELEV. B**

**THIRD FLOOR ELEV. B  
(OPTIONAL 2 BATHROOM)**



3 BEDROOMS | 1.5-2.5 BATHROOMS



ELEVATION A

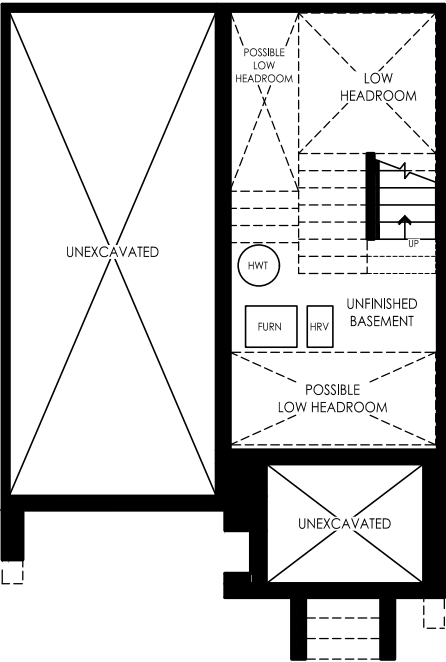
INTERIOR



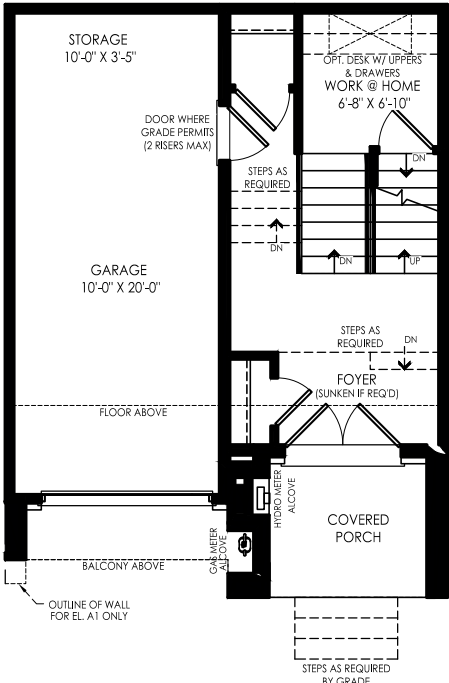
ELEVATION B

INTERIOR

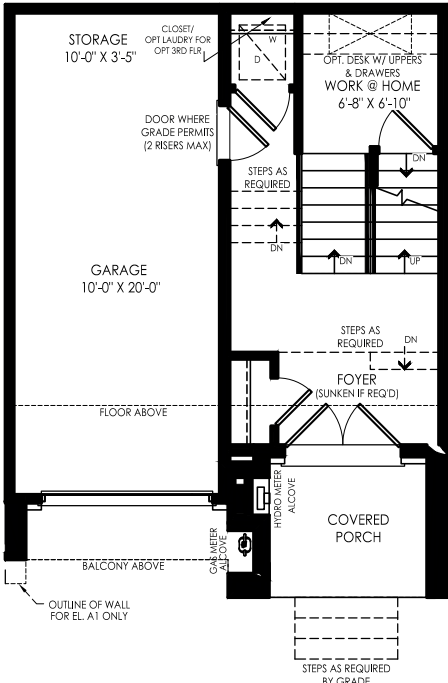
3 BEDROOMS | 1.5-2.5 BATHROOMS



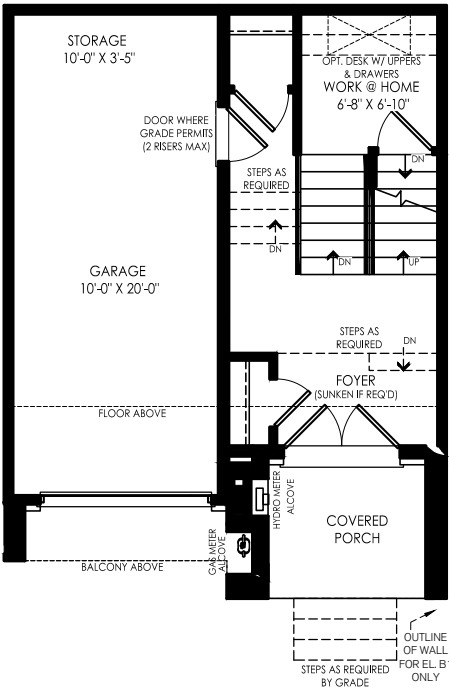
BASEMENT ELEV. A & B



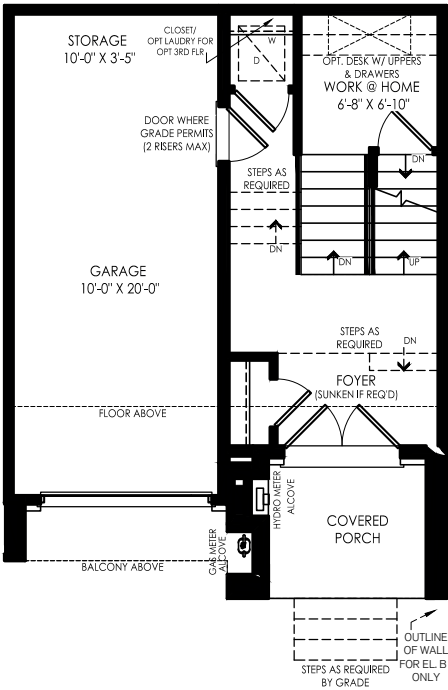
GROUND FLOOR ELEV. A



GROUND FLOOR ELEV. A  
(OPTIONAL 2 BATHROOM)



GROUND FLOOR ELEV. B



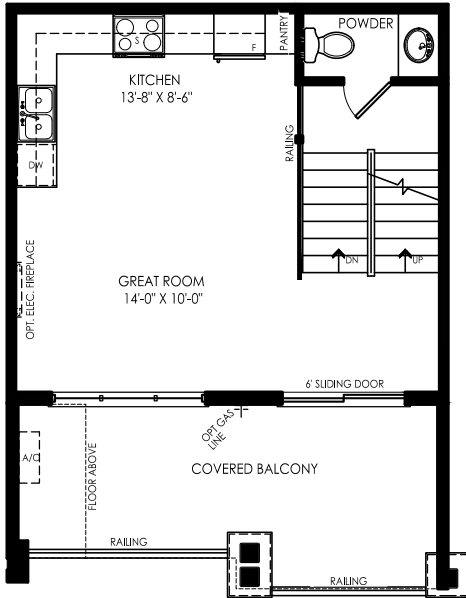
GROUND FLOOR ELEV. B  
(OPTIONAL 2 BATHROOM)

Plan is not to scale and all illustrations are artist concept only. Dimensions, specifications, layouts and materials are approximate only and are subject to change without notice. Tile patterns may vary. Window size and location may vary. Actual usable floor space may vary from stated floor area. Bulkheads required for mechanical purposes such as kitchen and washroom exhausts and heating and cooling ducts have not been indicated. Balcony location(s) and sizes vary per floor. Furniture and islands shown are displayed for illustration purposes only and are not included in the sale price. Suites are sold unfurnished. E.&O.E.

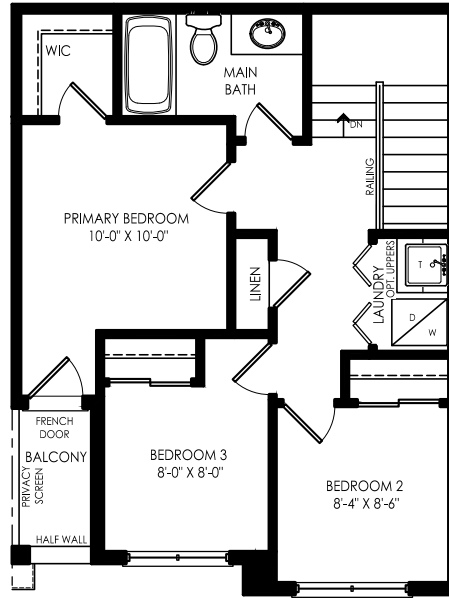


**ELEVATION A**  
1234 SQ.FT.

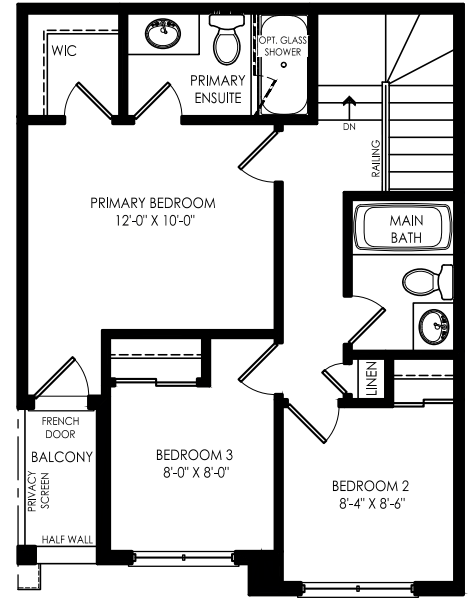
**ELEVATION B**  
1234 SQ.FT.



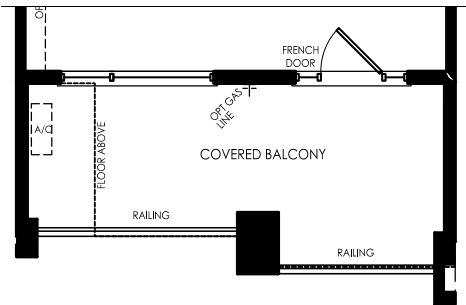
**SECOND FLOOR ELEV. A**



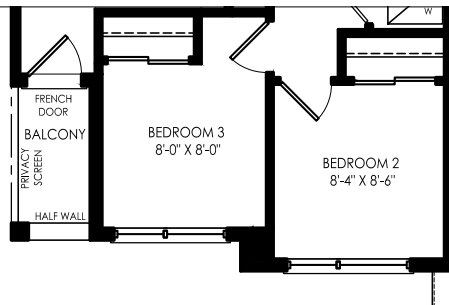
**THIRD FLOOR ELEV. A**



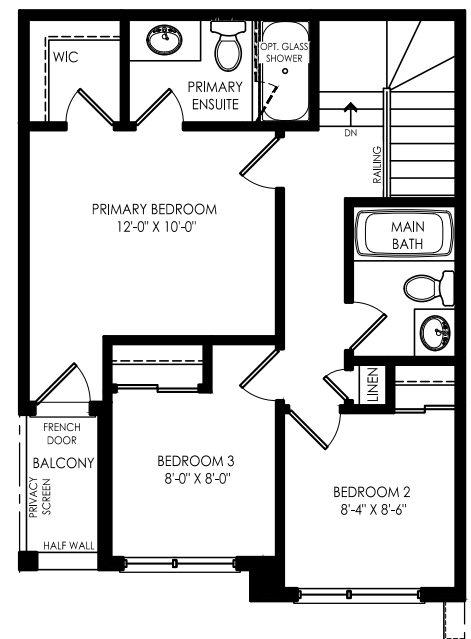
**THIRD FLOOR ELEV. A  
(OPTIONAL 2 BATHROOM)**



**SECOND FLOOR ELEV. B**



**THIRD FLOOR ELEV. B**



**THIRD FLOOR ELEV. B  
(OPTIONAL 2 BATHROOM)**